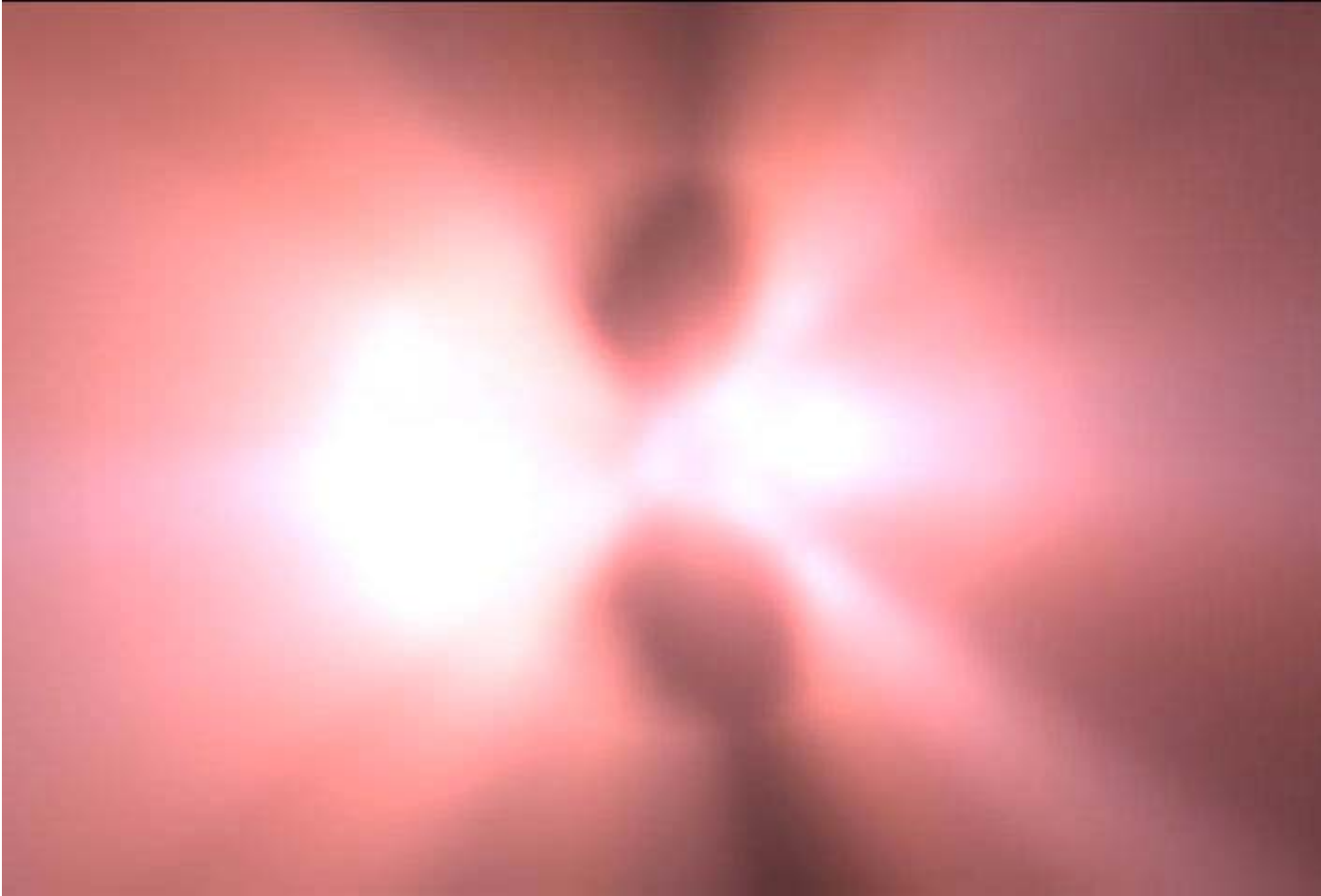


Kerio ~~WinRoute~~ Firewall 6



**KERIO TECHNOLOGIES, INC.
KERIO WINROUTE FIREWALL 6.1 REVIEWER'S GUIDE
JUNE 2005**

WHAT IS KERIO?

Kerio Technologies, Inc. provides Internet messaging and firewall software solutions for small to medium sized networks, emphasizing the secure delivery of network data.

Details

- Headquartered in the heart of the Silicon Valley
- First product launched in 1997, WinRoute Pro
- Incorporated as Kerio Technologies, Inc. in 2001
- ICSA Firewall Certification for WinRoute Firewall in June 2000
- Messaging product line launched with Kerio MailServer in April 2002, complete with Anti-Virus capabilities
- Network of more than 200 resellers supports customers in 70 countries with thousands of users
- Offices worldwide with presence in the UK and Czech Republic
- Self-sustaining, revenue-generated funding



Target Markets

- Small to medium-sized corporate networks
- Windows (Kerio WinRoute Firewall, Kerio MailServer and Kerio ServerFirewall)
- Macintosh and Linux platforms (Kerio MailServer)

Sample Kerio Technologies, Inc. Customers

- Technology: Viking Electronics, USA
- Education: Minooka Community High, Illinois, USA
- Utilities: Oregon Electric Group, Portland
- Government: Town of Provincetown, MA

Did you know?
Kerio WinRoute Firewall's proprietary SSL-based VPN allows companies to configure their VPN in two scenarios: server-to-server and client-to-server.

INTRODUCING KERIO WINROUTE FIREWALL 6.1

Kerio WinRoute Firewall sets new standards in versatility, security and user access control. Designed for small to medium-sized corporate networks, it defends against external attacks and viruses and can restrict access to websites based on their content.

WHAT'S NEW WITH VERSION 6.1?

- **Clientless SSL VPN:** Integrated clientless SSL VPN allows companies to provide remote secure access to files using only an Internet browser. Users can browse the file directory, upload and download files and create directories. Kerio WinRoute Firewall 6.1 even checks every file being transferred for viruses.
- **Transparent Active Directory Support:** A local database of users is no longer needed as all users can be authenticated against a centralized Active Directory. User management and administration becomes even simpler.

- **Advanced VPN Tunnel Routing:** Allows administrators to control the routing information exchanged between VPN tunnel endpoints. Prevents poisoning of routing tables.

CORE FEATURES

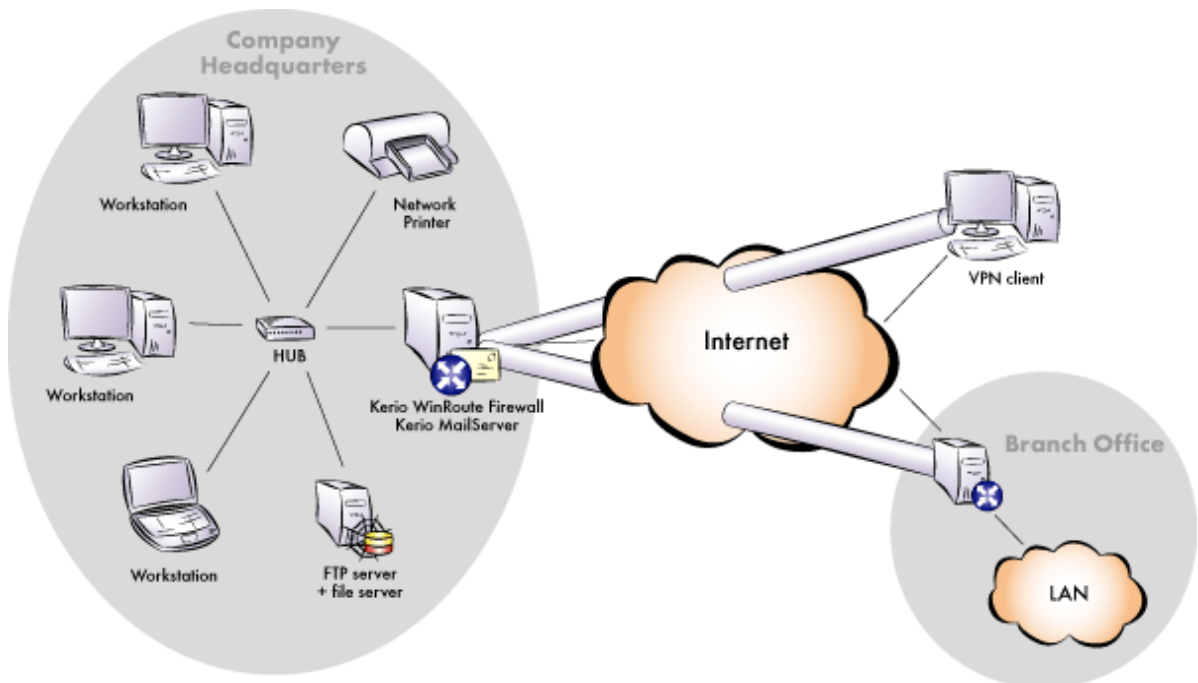
1. ICSA Labs-certified corporate firewall: Certified since 2000, Kerio WinRoute Firewall provides targeted, thorough stateful firewall protection for small to medium-sized corporations.

2. Integrated SSL-based VPN Server and Client: Simple yet powerful one-click VPN Client for Windows is the easiest way to deploy VPN. Kerio's SSL-based VPN Client for Windows allows remote employees to have full access to company resources for all and every application – at no extra cost!

3. Surf protection: When employees spend more time browsing useless Internet sites than working, Kerio WinRoute Firewall sets them straight. With about 60 categories of web content, Kerio WinRoute Firewall can restrict which sites employees can view and which sites they can't.

4. Antivirus protection: With built-in McAfee Antivirus, Kerio WinRoute Firewall will act as an antivirus gateway. It will scan all email (SMTP, POP3) and web (HTTP, FTP) traffic for viruses.

5. Real-time network monitoring: Administrators have real-time access to all web surfing and other activities, in order to keep a close eye on what the network is exposed to and to prevent security breaches.



A typical corporate network setup.

MINIMUM SYSTEM REQUIREMENTS

- Pentium III
- 256 MB RAM
- 20 MB HDD free for installation
- Additional space for logging and cache
- Minimum of two network interfaces (including dial-up)
- Windows 2000/XP/2003

Did you know?
Kerio WinRoute Firewall offers advanced features for experienced administrators such as content filtering and real-time network monitoring - so they can accurately review a user's network activities.

HOW TO INSTALL KERIO WINROUTE FIREWALL 6.1

Kerio WinRoute Firewall 6.1 is a complex tool for connection of the local network to the Internet and protection of this network from intrusions. It is designed for Windows 2000, XP, and 2003 operating systems.

Quick Start

1. Run the Kerio WinRoute installation program and select the “Typical” installation.
** Disable the Internet Connection Sharing (Windows 2000, XP) or Internet Connection Firewall (Windows XP sp2) services if detected by the installation program, otherwise WinRoute might not function correctly.*
2. Define a username and password that will be used for the administrative account.
3. You might receive a warning that the Kerio VPN adapter has not passed Windows Logo testing. It is safe to ignore this warning and click “Continue Anyways.”
4. Restart your machine when the installation is completed.
5. After reboot, run the Kerio Administration Console (Start / Programs / Kerio). Connect to the localhost (the local computer) with the user name and password defined during installation. The Network Rules Wizard will be started automatically after the first login.

You are able to set the following parameters using the Wizard:

- Internet connection type — type of interface via which the firewall is connected to the Internet
- Internet interface — select an Internet interface or appropriate dial-up. Supply the username and password for the appropriate account if the selected type is a dial-up connection.
** In case of dial-up connection, WinRoute requires a corresponding username and password. Specification of this login data is not required if the information is already saved in the operating system. If not, specify a Username and Password for a corresponding dial-up connection.*

- Rules used for outgoing traffic — these rules enable access to Internet services.
- VPN Server policy — check Yes, I want to use Kerio VPN to create rules that will enable interconnection of the headquarters with branch offices as well as connections of remote clients.
- Rules for incoming traffic — for example, a mapping to an SMTP (email) server.
- Sharing of the Internet connection — network address translation (NAT) must be enabled if private IP addresses will be used within the LAN

Additional Features

- **Proprietary SSL-based VPN server and client:** Kerio WinRoute Firewall provides a proprietary VPN solution that can be applied to the server-to-server and client-to-server modes. This VPN solution can perform NAT (even multiple) at both ends.
- **Email notifications:** KWF can send email notifications informing users about various events. All sent notifications are saved in a special log file.
- **User quotas:** A limit can be set for transmitted data per each user. This limit can be set for the amount of downloaded or/and uploaded data per day/month.



These limits are called quotas. If any quota is exceeded, the connection to the Internet will be blocked for a corresponding user. Email notification can be optionally sent to the user.

- **Blocking of P2P networks:** KWF can detect and block so called peer-to-peer networks (networks used for sharing of files, such as *Kazaa*, *DirectConnect* etc.).
- **Statistics:** Detailed statistics of the firewall interface (current speed of transmitted data, amount of data transmitted in certain time periods) as well as of individual users (amount of transmitted data, used services, categories of connected Websites, etc.) can be viewed in KWF.
- **VoIP support:** Kerio WinRoute Firewall does not interfere with a network's VoIP technology and also protects your infrastructure from unwanted VoIP activity.

SPECIALIZED TECHNICAL SUPPORT FOR REVIEWERS

Kerio Technologies, Inc. offers users of its products comprehensive, easy-to-understand materials for general support as well as top-of-the-line, free of charge access to our technical support staff. These tools include:

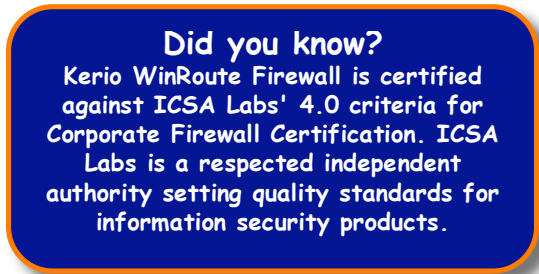
- Manuals are included on www.kerio.com/supp_kwf_manual.html as well as within the box copy of the software.
- A thorough Knowledge Base on support.kerio.com, which is furthered by our staff and our community of active Kerio WinRoute Firewall administrators.
- Help pages are available throughout the setup process, and within the working software.
- Kerio's website is constantly updated, to reflect the latest product update information and supporting materials.

Kerio Technologies, Inc. has arranged for reviewers of Kerio ServerFirewall 2 to receive specialized technical support, on a case-by-case basis. Please contact Jennifer Hakes, PR Manager at Kerio or Tiffany Anderson at Walt & Company Communications for further information:

Jennifer Hakes
Public Relations Manager
Kerio Technologies, Inc.
408.496.3344
jhakes@kerio.com

- or -

Tiffany Anderson
Account Manager
Walt & Co. for Kerio
408.496.0900
tanderson@walt.com



Did you know?
Kerio WinRoute Firewall is certified against ICSA Labs' 4.0 criteria for Corporate Firewall Certification. ICSA Labs is a respected independent authority setting quality standards for information security products.

FREQUENTLY ASKED QUESTIONS

1. What is the difference between Kerio WinRoute Firewall and a firewall appliance?

Kerio WinRoute Firewall is an Internet security software solution designed for small to medium-sized businesses. Because it is software, it can be updated regularly and is able to grow with an organization. Firewall appliances typically have a ceiling of users, and to upgrade, additional appliances – or “boxes – need to be purchased. Kerio WinRoute Firewall is flexible and easier to administrate.

2. How do I know if my organization is large enough to necessitate a corporate gateway firewall like Kerio WinRoute Firewall?

Though we are not in a position to speculate about the rising cost of administering against unwanted worms or viruses, we can say that in our experience, anyone in a company setting – no matter how many users – is at risk if they are regularly accessing the Internet.

3. Where can I download my unrestricted 30-day trial copy of Kerio WinRoute Firewall 6.1?

Kerio WinRoute Firewall 6.1 is available for download on a 30-day trial basis at <http://www.kerio.com/kwf>. The trial version is unrestricted due to our belief that it is vital for an administrator to have access to all features and functions of a corporate messaging product before making an informed purchasing decision.

4. What is the core market for Kerio WinRoute Firewall 6.1?

Kerio WinRoute Firewall is designed primarily for small to medium-sized networks, for corporations up to 1,000 users. Kerio WinRoute Firewall is used in a variety of different industries including education, government, technology, marketing and design.

5. What is the maximum number of users that can be managed through Kerio WinRoute Firewall 6.1?

Since the number of users that can be supported through Kerio WinRoute Firewall is dependent on the hardware used, we usually estimate that 1 MB of capacity is required per every 5 users.

6. How long will installation take?

Installation and setup of Kerio WinRoute Firewall 6.1 by an experienced administrator should take anywhere from 30–45 minutes.

7. With the addition of clientless SSL-based VPN, will I still need to configure desktops to access our corporate VPN connections?

No – that is the benefit of clientless SSL-based VPN. In Kerio's implementation of the technology, administrators can control, configure and manage VPN "clients" through an easy to use and access remote Web application. This Web-based application removes the need for client to client configuration, which often leaves room for error.

8. What is the difference between Kerio Personal Firewall, Kerio ServerFirewall and Kerio WinRoute Firewall? How do I know if I need one or all of these solutions?

Each type of firewall plays a different role for defense in depth by offering different types of features:

- Kerio WinRoute Firewall is a network-based firewall that provides industry-leading security for networks of all sizes. On top of the standard router features, Kerio WinRoute Firewall also provides a VPN server, antivirus gateway protection, surf protection, content filtering, user-specific access management, extended logging, graphical statistics and more.
- Kerio Personal Firewall is traditionally used by home users, but also is used to protect the workstation inside a network-based

firewall. This adds a layer of protection from attacks that originate from inside the network. Kerio Personal Firewall is also used for machines outside the network such as machines used for working from home or traveling.

- Kerio ServerFirewall is a robust, multi-layer host-based intrusion prevention system designed to protect an organization's most vital assets such as web servers, database servers, or mail servers. With remote administration, Kerio ServerFirewall is ideal for managing collocated servers or machines in the server room. With an online knowledge base of process information and extended logging administrators will be more prepared for attacks and can customize the security so they can set it and forget it.

It is not unusual for an SMB or SME to use all three of these solutions in the process of securing their network environments. However, since Kerio Personal Firewall is often deployed at the consumer level, we find that most of our customers take advantage of the technology offered by Kerio WinRoute Firewall and Kerio ServerFirewall, as each product complements each other while securing the network.

